

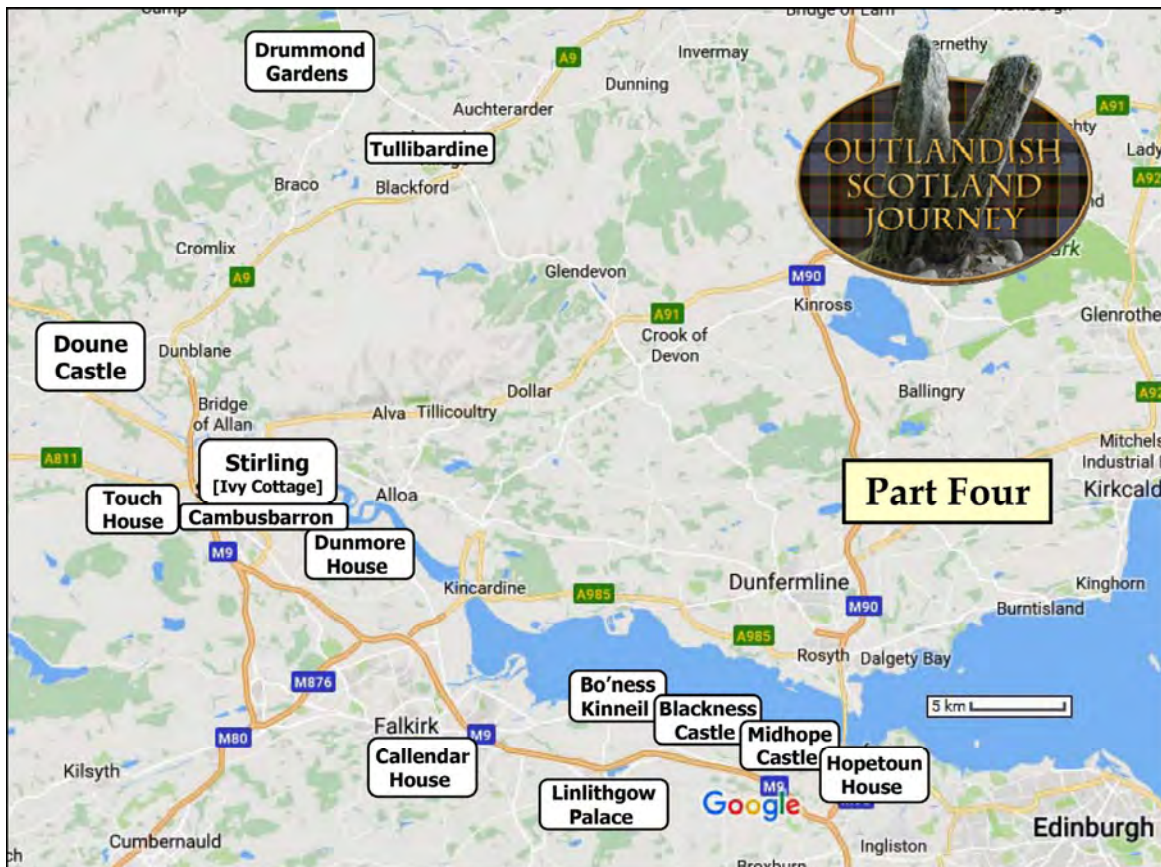


# Part Four Preview

[OutlandishScotland.com](http://OutlandishScotland.com)

A Novel Holiday Travel Guidebook

## Part Four Introduction



Part 4 of *Outlandish Scotland Journey* consists of 14 Sites:  
The City of Stirling & Nearby Places,  
Sites Between Stirling & Edinburgh.



Eight locations are rated **Great Site**.



Four are rated **Might-Be-Fun**.



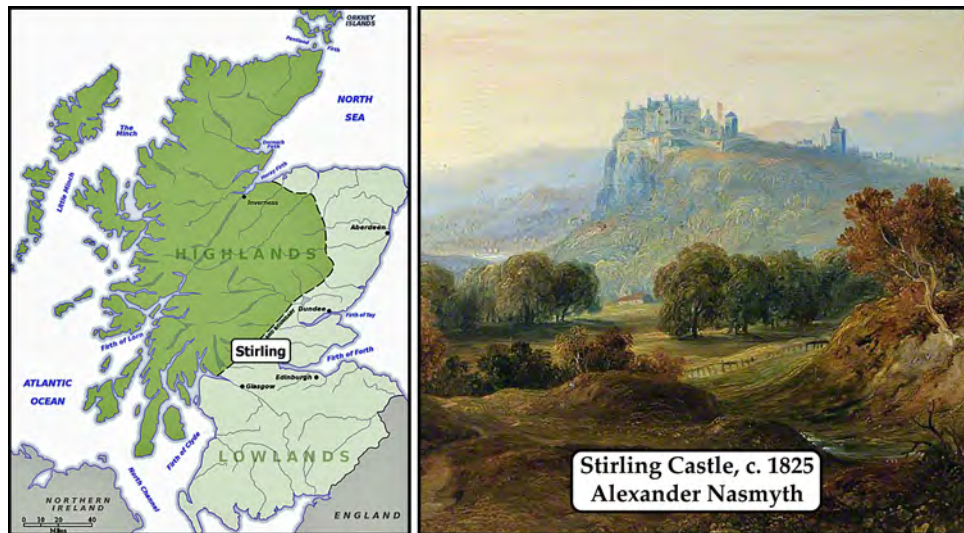
Two received a **Skip-It** rating.

The chapters describing these 14 sites provide rating explanations important to making your holiday itinerary decisions.

## City of Stirling: Site #25



A Novel Location (Sort Of)  
A City Rich with Scottish History  
Three Minor *Outlander* Film Sites



[©2007] Rockley] [©National Trust for Scotland] Segments, enhanced.

Strategically located in central Scotland, Stirling is known as the “Gateway to the Highlands.”

“It has been said that ‘Stirling, like a huge brooch clasps Highlands and Lowlands together.’ Similarly, ‘He who holds Stirling, holds Scotland’ is often quoted. Stirling’s key position as the lowest bridging point of the River Forth before it broadens towards the Firth of Forth, made it a focal point for travel north or south.”

<https://en.wikipedia.org/wiki/Stirling>

...[Section Removed]

### Barely a Novel Location

Stirling is mentioned in chapter 42 of *Dragonfly in Amber*. Jamie, Dougal, and Young Simon rode there to plead with Charles Edward Stuart to release the Lallybroch men who had been arrested for desertion and imprisoned in Edinburgh’s Old Tolbooth.

While Jamie headed to Stirling, Claire, Murtagh, and Fergus stayed in Edinburgh, visiting the Lallybroch men daily, delivering what food and medicines she could lay her hands on. At the end of the chapter, when the Lallybroch men were freed from the Tolbooth, Claire decided to personally lead them to Stirling—as Jenny Cameron led her brother’s men to Glenfinnan.

Claire’s journey with the men to Stirling isn’t described in the novel, nor is her Stirling reunion with Jamie. Instead, chapter 43 opens with a few paragraphs of Claire chatting with a piper, Labhriunn MacIan, at the gates of the city. Then, the action abruptly shifts to preparation for the battle of Falkirk.

**And, THAT is the entirety of Stirling’s role in Diana Gabaldon’s novels.**

In Season 2 of the STARZ *Outlander* series, the Edinburgh Tolbooth storyline and Jamie’s journey to Stirling were skipped. In fact, the only onscreen mention of Stirling is found in Season 1’s episode 107, “The Wedding” —part of a hilarious segment that wasn’t in the novel.



[*Outlander* Season 1 screenshot segment (enhanced)]

**Brothel Madam:**

“I have something might suit ye. ... Courtesy of a certain lord with whom we are familiar. His lordship bought it in London for his lady. On his way home, he lost the rest of his money at the tables in Stirling. So, when he came by us for his usual visit, he was long on desire—but a wee bit short on clink. ... Never been worn ... No lass should wear another woman’s dress on her wedding day.”

**Ned Gowan:**

“Well, that’ll do nicely.”

**And, THAT is the entirety of Stirling’s role in the television show.**

**Outlander Film Sites**

A very minor *Outlander* film site is situated 8 miles from the city: **Deanston Distillery**. We’ve included it here, within the Stirling chapter, because it doesn’t warrant its own chapter.

...[Section Removed]



Deanston Distillery receives a **Skip It** rating because:

- With the props and set dressing elements long gone, the distillery warehouse used for filming looks absolutely nothing like what was seen on screen. In fact, nothing at Deanston Distillery will remind you of *Outlander*.
- Photography is not allowed within Deanston Distillery's warehouses.
- Most Outlanderites will be far happier spending their holiday time visiting more recognizable film sites.

**That said; there is one great reason for visiting Deanston Distillery:**

If you are a whisky lover and wish to tour a distillery while on your Outlandish Scotland Journey, Deanston Distillery would be the perfect place to visit.

Deanston is open 7 days a week, all year long, from 10am to 5pm.

Six different tours are available each day, ranging in price from £9 to £35 per person.

- Two 50 minute Tours are available (without reservation) on the hour, every hour, from 10am to 4pm.
- Four Specialty Tours—requiring advanced booking—are also available, lasting between 1 and 2 hours.

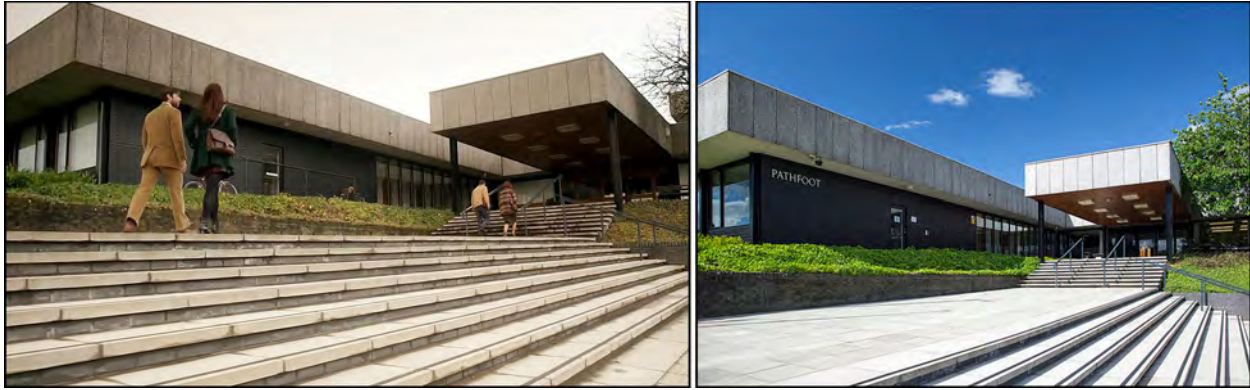
To learn more about Deanston Distillery, visit their website.

<http://deanstonmalt.com/>



[©2014 Mandy Tidwell [greatscotblog.com/2014/10/14/lights-camera-outlander-scotland-day-12/](http://greatscotblog.com/2014/10/14/lights-camera-outlander-scotland-day-12/) ]

Two additional minor film sites located within the City of Stirling are found on the grounds of the University of Stirling. One of them is the yard of a boarded-up, dilapidated cottage, situated in a remote campus area. Ivy Cottage briefly appeared in two episodes of *Outlander* Season 1.



[*Outlander* Season 2 screenshot (enhanced)] [©2014 University of Stirling (enhanced)]

The other is the Pathfoot Building, located near the University’s main entrance. Scenes for the final episode of Season 2, “Dragonfly in Amber,” were shot here.

You’ll learn about these two **Might-Be-Fun**-rated locations in the **University of Stirling (Site #26)** chapter.

...[Section Removed]



[©2016 Andrew Shiva segment (enhanced)]

## Stirling Castle

As the city’s oldest and most spectacular claim to fame, touring Stirling Castle is a must! No one who comes here should miss the opportunity to explore this remarkable citadel.

“Stirling Castle ... is one of the largest and most important castles in Scotland, both historically and architecturally. The castle sits atop Castle Hill, an intrusive crag, which forms part of the Stirling Sill geological formation. It is surrounded on three sides by steep cliffs, giving it a strong defensive position. Its strategic location, guarding what was, until the 1890s, the farthest downstream crossing of the River Forth, has made it an important fortification from the earliest times. Most of the principal buildings of the castle date from the fifteenth and sixteenth centuries.

A few structures of the fourteenth century remain, while the outer defenses fronting the town date from the early eighteenth century.”

[https://en.wikipedia.org/wiki/Stirling\\_Castle](https://en.wikipedia.org/wiki/Stirling_Castle)

If you’re a Scottish history buff or a Castle-Bagger (someone who seeks to tour as many castles as possible), you’ll want to spend an entire day visiting Stirling Castle. Outlanderites eager to head to Outlandish sites will probably be satisfied with spending 2 to 3 hours here—perhaps half a day (4 hours).

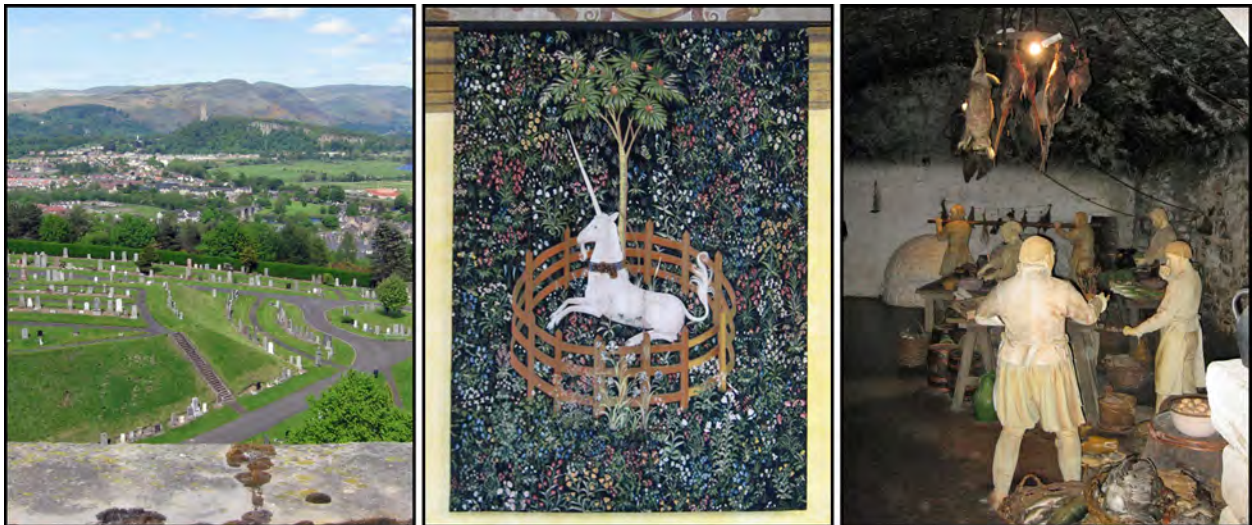


[Internet-posted photo ©Unknown] [©2016 Andrew Shiva] Segments, enhanced.

### Outlandish Stirling Castle Tips

Stirling Castle is an enormous, sprawling complex, comprised of several buildings, multiple levels, and numerous areas of interest—in addition to two cafés and three gift shops. Even if you spent an entire day here, you might not see everything.

...[Section Removed]



[©2006 CD Miller segments (enhanced)]

**Stirling Castle Tip #6 is Actually a Warning:****Do Not be Surprised if Your Visit Lasts Longer than Expected**

Even though it's a non-*Outlander* site, Stirling Castle is truly an amazing place to explore and enjoy. Areas such as the Outer Defenses afford stunning countryside views. Each of the seven reconstructed "Hunt of the Unicorn" tapestries adorning the Queen's Inner Hall of the Royal Palace—a £2 million project that took 13 years to accomplish—are mesmerizing. Displays constructed in the recently excavated and restored Great Kitchens are compelling.

Basically, any plan to scurry through Stirling Castle may be thwarted by an irresistible urge to tarry after turning a corner and finding yet another gem.

[End of Site #25 Sample]

## University of Stirling #26



### Two Minor *Outlander* Seasons One and Two Film Sites



The two film sites found on the University of Stirling campus earn a **Might-Be-Fun** rating because:

- Although the exterior of the first film site is quite recognizable, in the absence of the set dressing elements and costumed extras, interior filming areas look nothing like what was seen on screen.
- The second, more remote building, Ivy Cottage, is actually a **Skip-It** site, due to the unsightly fencing recently erected around it.
- We believe that most *Outlander*ites will be happier spending their holiday time at the several **Great-Site-rated** locations near Stirling.
- Why not a **Skip It** rating? The exteriors of both University of Stirling *Outlander* film sites *are* recognizable, and some *Outlander*ites may want to visit them.

Thus, we'll provide directions for reaching the two University of Stirling film sites. But, first, we need to dispel the myth that a castle located on the campus was used for filming.

...[Section Removed]





[*Outlander* Season 2 screenshot segments (enhanced)]

In the interest of full disclosure, there is a third film site on the University grounds—the home of Greg and Gillian Edgars. We’re reasonably certain that this episode 213 footage was filmed within one of the old Stirling University Staff Housing bungalows built in 1966-67. Located near the principal’s house (support vehicles were probably staged in the large parking plaza there, as well as at Airthrey Castle), these are private residences and off-limits to the public.

There really is no reason to intrude upon the privacy of those who live in these homes!

- The film site bungalow’s exterior wasn’t seen onscreen.
- Its interior was packed full of period furniture and props—none of which remain.
- Furthermore, the interiors of these bungalows have been completely refurbished in recent years. They no longer look *anything* like what was seen on screen.

Learn More About the University of Stirling:

- [https://en.wikipedia.org/wiki/University\\_of\\_Stirling](https://en.wikipedia.org/wiki/University_of_Stirling)
- <https://www.stir.ac.uk/about/our-history/>
- <http://portal.historicenvironment.scot/designation/GDL00010> (Airthrey Castle)
- [http://www.rampantScotland.com/castles/blcastles\\_airthrey.htm](http://www.rampantScotland.com/castles/blcastles_airthrey.htm)

To see additional site photos, go to the **University of Stirling** board on our **Outlandish Scotland Journey Pinterest Site**:

<https://www.pinterest.com/chasOSJ/university-of-stirling/>

## OutlanderLinks

All website addresses and coordinates found in this chapter (including those in the Time & Travel section, below) are available in the **Site #26 OutlanderLinks** PDF, posted free of charge on the **Part 4 OutlanderLinks** directory of our website.

<http://OutlandishScotland.com/26OutlanderLinks.pdf>

Updated University of Stirling information available after *Outlandish Scotland Journey* is published will also be posted in this directory.

## Time & Travel: University of Stirling

### Visiting Time

It's about a 15 minute drive from the Stirling Castle esplanade car park to the Pathfoot Building's entrance. Conceivably, one could drive here, snap a few pix, and be back on the road in only half an hour. Those who also wish to visit Ivy Cottage will need to schedule at least 90 minutes on campus—longer if you'll be wandering through the Logie Old Kirk graveyard.

### University of Stirling Hours of Operation

The grounds of the university are open to the public at all times, however, visitors should be very careful not to disrupt campus life. The privacy of students and staff should be respected at all times.

- Visit only during daylight hours—9am to 5pm is best.
- Drive slowly and carefully when traveling through the grounds.
- Pay and display parking charges are in force Monday through Friday during term time.
- Stick to the public areas of any building you enter—stay out of classrooms and lecture halls.

The Pathfoot Building houses the main University Art Collection.

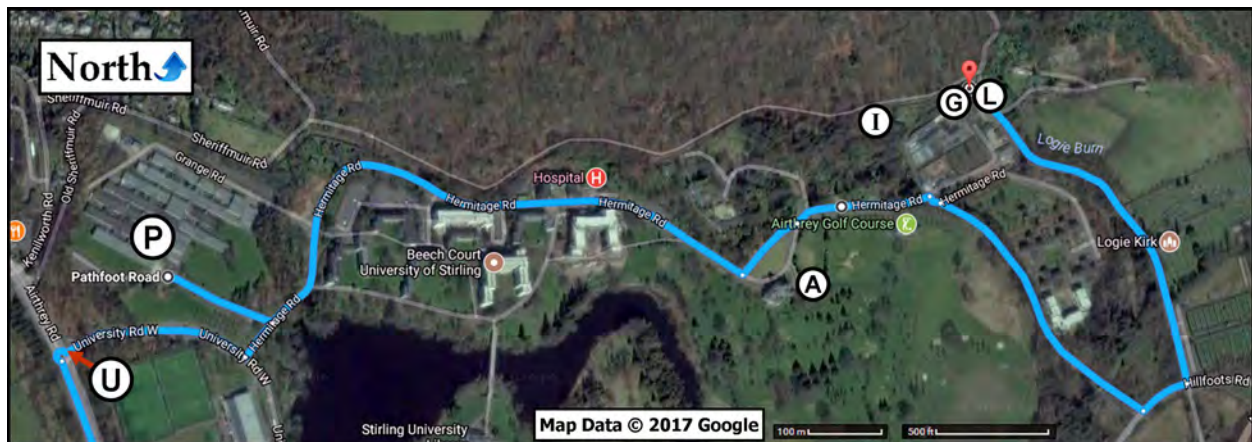
It is free and open to the public on weekdays, from 9am to 5pm.

Those who wish to visit the Art Collection should enter at the Roger and Brianna steps, then follow the signs to Crush Hall.

### Public Transportation Directions

The University of Stirling website has detailed directions and a multitude of links helpful for reaching the campus on foot, by bicycle or bus.

<https://www.stir.ac.uk/about/getting-here/>



[Google Map segment (enhanced) ©2017 Google]

### Plan of Attack & Driving Directions

Our Outlandish University of Stirling map—along with a closeup map of the walk to Ivy Cottage (something you'll see below)—is available in a PDF, posted free of charge on the **Part 4**

**OutlanderLinks** directory of our website. <http://OutlandishScotland.com/26UofSmaps.pdf>

[End of Site #26 Sample]

## Cambusbarron: Site #31



*A Might-Have-Been* Season FOUR Film Site!



[Internet-posted pic, ©Unknown segment (enhanced)]

Murrayshall Quarry, part of Gillies Hill, near Cambusbarron

We wrote this chapter (and published its entirety in the 2017 edition of the *Outlandish Scotland Journey Part Four eBook*) back when Cambusbarron’s Gillies Hill was a strong contender for **Fraser’s Ridge**—a long-term film site that would feature in *Outlander’s* Season Four: *Drums of Autumn*.

In April of 2017, a proposal was presented to Stirling Council planners by *Outlander* Supervising Location Manager, Hugh Gourlay, requesting permission to use Murrayshall Quarry and Murray’s Wood near Cambusbarron as film sites for the series.

[http://www.dailyrecord.co.uk/news/local-news/plans-film-new-series-fantasy-10178196#ICID=sharebar\\_twitter](http://www.dailyrecord.co.uk/news/local-news/plans-film-new-series-fantasy-10178196#ICID=sharebar_twitter)

Several *Outlander* news websites were quick to investigate and speculate as to what filming might occur in Cambusbarron’s woodland area.

“Cambusbarron is a village in Stirling, Scotland. It is situated 2 miles west of the city of Stirling, and 10 miles south of Doune Castle. The areas being considered are Murray’s Wood and Murrayshall Quarry. Both to the south of the village, the locations are a picturesque wooded area and an unused quarry respectively.

“Proposals for the area are quite comprehensive. As well as access for vehicles, the proposal asks for temporary film set buildings, a construction compound, material storage and a filming

service area. All this suggests a significant investment in the location. And it is believed [that the filming will] last at least a year.

“Our guess is that this will be the location for Fraser’s Ridge. In line with ‘Drums of Autumn,’ the fourth book in the series, Fraser’s Ridge will be introduced in Season 4 of *Outlander*. Those who have read the books will appreciate the iconic nature of this location.”

<http://www.outlanderlocations.com/news/cambusbarron-site-of-frasers-ridge/>

Sadly, in January of 2018 we learned that the plan to film in Cambusbarron had officially been abandoned.

“The *Outlander* production team earlier sought permission to build [the Fraser’s Ridge] set in woods outside Cambusbarron, near Stirling.

“However, this plan is no longer going ahead.”

<https://www.scotsman.com/news/outlander-cast-and-crew-return-to-fife-village-1-4669949>

It is unclear whether the *Outlander* production team withdrew their request, or whether the Cambusbarron Community Council denied them permission to film in the area. Basically, it doesn’t matter. **Cambusbarron is NOT an *Outlander* Season Four film site.**

To avoid renumbering all subsequent chapters, we’re leaving this starkly abbreviated Cambusbarron chapter in *Outlandish Scotland Journey Part Four*.

Having spent weeks researching and writing an in-depth chapter about this location, however, we hated the idea of simply discarding it. So, we didn’t!

If you’d like to read the original, full-length Cambusbarron chapter, you’ll find it in a PDF, freely posted on the **Part Four OutlanderLinks** directory of our website.

<http://outlandishscotland.com/31Cambusbarron2017.pdf>

### 2019 Update

Rumor has it that a night shoot took place somewhere in Cambusbarron on Friday, August 9th, 2019—possibly involving a certain hanging scene for Season Five. Even if the rumor proves true, the location would be impossible to find. Thus, Cambusbarron continues to bear a **Skip-It** rating.

[Above is the *entirety* of Site #31’s chapter in the *Outlandish Scotland Journey Part Four* paperback!]

## Dunmore Park House: Site #32



A Minor *Outlander* Season One Film Site  
Neighbor to the “Most Bizarre Building in Scotland”



[©2017 Susan Beech segment (enhanced)]

Dunmore Park House is a roofless and derelict Tudor Gothic mansion on the grounds of Dunmore Park—a large estate that originally bore the name, “Elphinstone,” for the family which had been in residence there since sometime prior to 1338.

...[Section Removed]



Dunmore Park House receives a **Might-Be-Fun** rating because:

- Although the 30 minute hike to reach it involves very little ascent, the paths that lead to Dunmore Park House are uneven and often muddy.
- Due to its ever-deteriorating state, entering the building is a bad idea.
- Only two areas were used for filming, and those scenes appeared on screen only briefly.
- Visiting this minor film site is time-consuming. In addition to the 1-hour round-trip walk to reach the house, you cannot possibly come here without also spending time at the Dunmore Pineapple. (More about that below.)
- Why not a **Skip It** rating?

The scenes shot here are iconic, and the areas where filming took place are easily recognized, even without the props and set dressing.

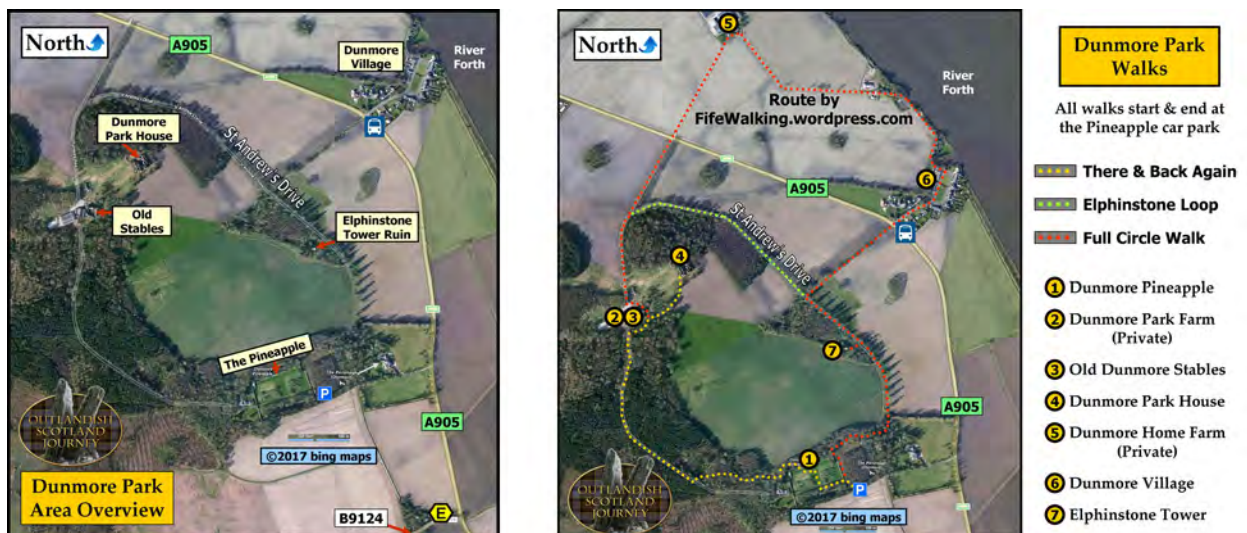
Dunmore Park House and its nearby stable block are hauntingly beautiful. And then, there's that Pineapple!



[©2015 Daily Record (enhanced)]

The first film site you'll see is the grand porte-cochère that frames the mansion's main entrance on the west end of its southern face—the front of the house. The family's motto, "Fidelis in Adversis" — Faithful in Adversity — adorns the banner over a shield bearing the creation date of Dunmore Park House.

...[Section Removed]



[Underlying map segments ©2017 Microsoft® Bing™]

### Dunmore Park Maps

You will most definitely need a map and directions to reach Dunmore Park House. Our **Dunmore Park Maps** PDF is posted free of charge on the **Part 4 OutlanderLinks** directory of our website. The

Map Key is included within the PDF.

<http://OutlandishScotland.com/32DunmoreParkMaps.pdf>

The PDF contains full-page copies of the maps above and below—7 maps in all.

The routes shown on our walking maps were developed by Susan Beech of Fife Walking, who generously assisted with our variations on her Full Circle Walk. You can view the entirety of Susan's Dunmore Pineapple Circular walk information by clicking on the link below.

<https://fifewalking.wordpress.com/walks-outwith-fife/dunmore-pineapple-circular-walk/>

Alternatively, we provide the pertinent parts of her Full Circle Walk directions following the maps inserted below.

...[Section Removed]

### Driving Directions

Many TripAdvisor reviewers complain that the Dunmore Pineapple property entrance is difficult to find—reporting that some SatNav/GPS devices lead you astray if using the post code, or clicking on a preprogrammed reference. Happily, you should have no difficulty if you code-in the coordinates provided below.

**Coordinates for the A905 and B9124 Intersection:** 56.072590, -3.777265

The entrance to Dunmore Pineapple's drive—the large "E" on our maps—is on the B9124, only 250 feet (76m) west of this intersection.



[Google Street View image segment (enhanced)]

After turning onto the B9124 from the A905, the gatekeeper's cottage and Pineapple driveway can be seen ahead, on your right.



[Google Street View image segment (enhanced)]

If approaching from the west on the B9124, however, slow down as you near the A905 intersection. The gatekeeper's cottage and Pineapple driveway entrance are before the intersection, on the left (north) side of the road, but cannot be seen until you actually reach them.

**Please Note:** Susan Beech of Fife Walking advises, "The access road to the car park is rough and has potholes so drive carefully."

Complaints about the poor condition of the Dunmore Pineapple driveway are also frequently voiced in TripAdvisor reviews. Drive slowly and carefully to avoid rental car damage.

[https://www.tripadvisor.com/Attraction\\_Review-g186527-d668068-Reviews-The\\_Pineapple-Falkirk\\_Falkirk\\_District\\_Scotland.html](https://www.tripadvisor.com/Attraction_Review-g186527-d668068-Reviews-The_Pineapple-Falkirk_Falkirk_District_Scotland.html)

### **Parking May be Problematic**

The Dunmore Pineapple car park is very small. You may find the little lot full. If so, there is only one other parking option—Airth Village.

- Parking on the shoulder of the A905 is right out!  
What looks like a seemingly innocent, 2-lane road, is a heavily trafficked highway. Locals often drive it at (what many consider) excessive speeds. Outlanderites who park along the A905 will risk damage to their rental car, and may find their vehicle missing (impounded) upon their return.
- Parking on the shoulder of the B9124 is also right out!  
This is a single-lane road. Outlanderites parking along it will incur the wrath of local drivers.
- There is no car park in Dunmore Village (to the north), and very little street-side parking there.
- The nearest car park is in Airth Village, to the south.





[Underlying map segment ©2017 Microsoft® Bing™]

Happily, the Wilderness Car Park in Airth Village (circled on the map above) is only a 15 minute walk from the Dunmore Pineapple car park.

**Airth Wilderness Car Park Coordinates:** 56.070722, -3.771246

[End of Site #32 Sample]

[End of the Part Four Preview]